



NICK + STEF'S
STEAKHOUSE

A sleek and contemporary steakhouse
steps away from Madison Square Garden

Adjacent to Madison Square Garden, Nick & Stef's Steakhouse offers an exciting change from old steakhouse decor. An ideal location for pre and post-game parties, dinner receptions or corporate events, this sleek, contemporary steakhouse features great steaks, fresh seafood, and signature sides. Nick & Stef's sophisticated bar also provides a welcoming reception for celebrations of all kinds.



FULL RESTAURANT

Contemporary and comfortable, Nick & Stef's main room is paneled in blonde woods and accentuated by subtle lighting. Approximately 6,000 square feet including a stylish bar, this space provides a sophisticated backdrop for your most exciting events.

SEATING CAPACITY: 150
STANDING CAPACITY: 250



ALCOVE

From corporate meetings to birthdays and dinner parties, this alcove is an intimate space for private gatherings, offering a view of the vibrant streets of Manhattan.

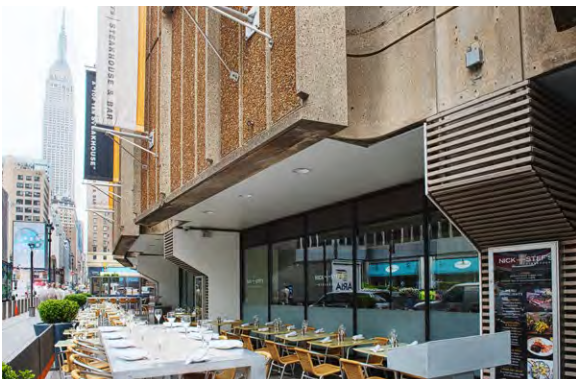
SEATING CAPACITY: 25
STANDING CAPACITY: 30



BAR & LOUNGE

Outfitted with contemporary high-top tables and flat screen TV's, this modern bar space is perfect for casual gatherings.

STANDING CAPACITY: 70



OUTDOOR PATIO

With views of the Empire State Building, the outdoor patio is available during the warmer months and is ideal for cocktail reception and social gatherings of every kind.

SEATING CAPACITY: 80
STANDING CAPACITY: 120